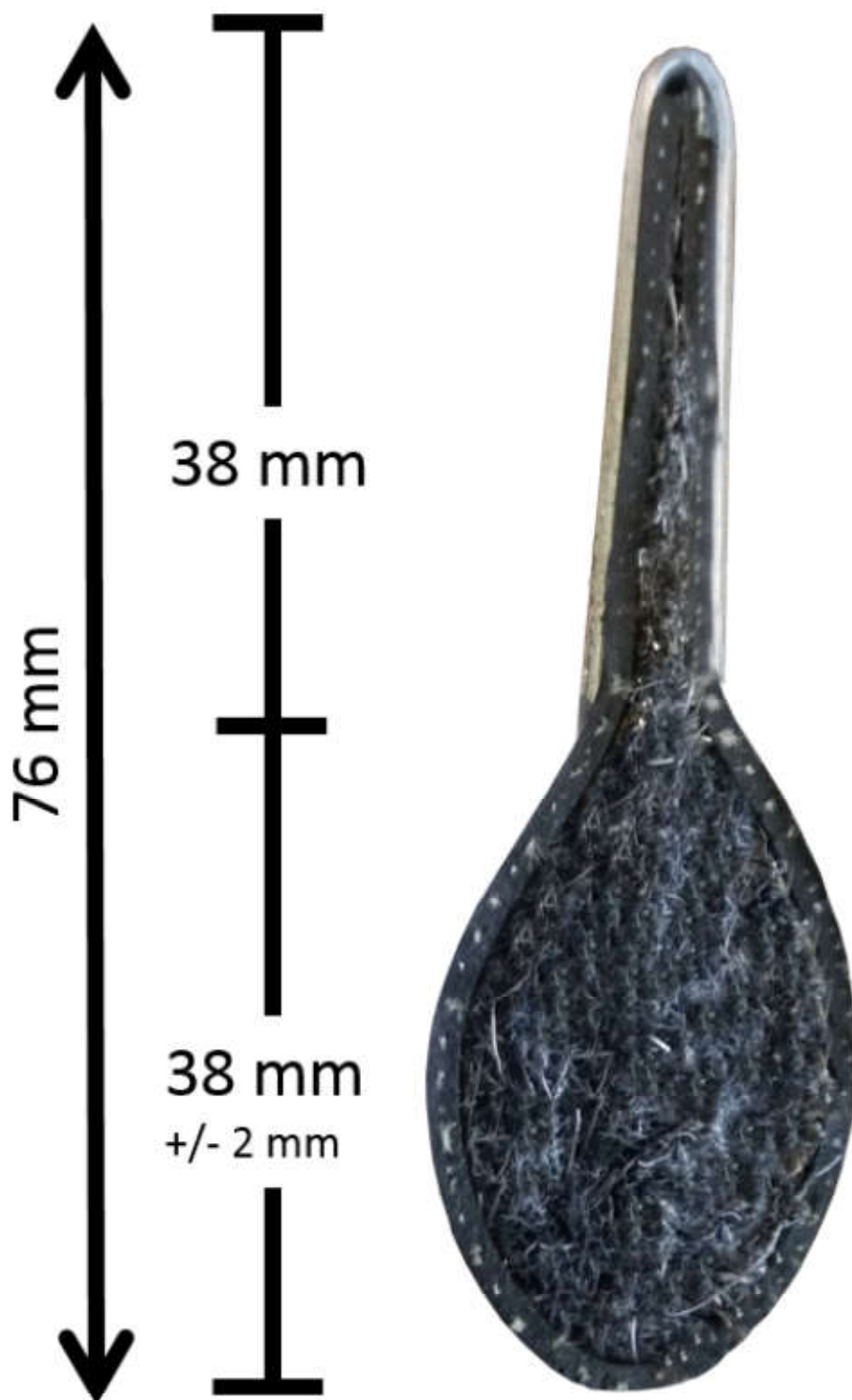




Heavy Duty Pest Control Door Sweep

Model: 162623E





Xcluder™ Pest Control Door Sweep Installation Instructions

Use for Part #s: 162600, 162602, 162604, 162608, 162620, 162622 & 162622-E, 162624, 162628

Thank you for your purchase of an **Xcluder™ Pest Control Door Sweep**, the best way to close the door on unwanted pests.

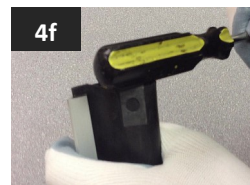
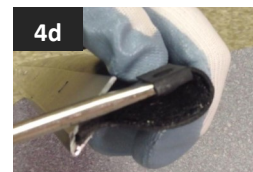
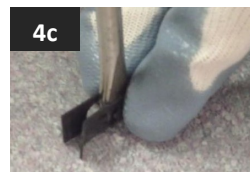
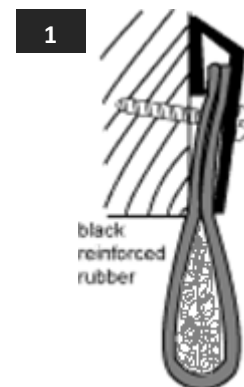
Tools Required:

1. Drill
2. Hacksaw – *only needed if the sweep needs to be trimmed to fit*
3. Sturdy scissors - *only needed if the sweep needs to be trimmed to fit*



Installation Instructions:

1. Sweep should be mounted on the outside of the door
2. Measure door and cut sweep to fit. If cutting is required, cut excess material from the end of the sweep that will be on the hinged side of the door.
3. When cutting the sweep, best results are obtained by first using a hacksaw to cut through the aluminum retainer and then sturdy shears to cut the rubber and Xcluder™ filling. NOTE: Sawing through the Xcluder™ filling is not recommended.
4. Metal end guards are already installed so you see how they look installed. Install the end guards on the opposite end of the sweep:
 - a. Using a standard screwdriver, gently separate Xcluder™ filling from the metal mesh in a 12mm wide x 19mm deep section at the middle of both faces on the sweep.
 - b. Place an end clip on it's side on a hard, flat, sturdy surface.
 - c. Hold the end guard and drive the standard screwdriver blade into the end guard at the looped end. This will separate the open end.
 - d. Place the opened end guard, flat side out, onto one of the edges of the door sweep in the location the Xcluder™ filling was separated from the metal mesh.
 - e. Holding the end guard in place with your thumb, pull the screwdriver from the end guard.
 - f. Using the screwdriver handle, tap the Xcluder™ end guard flush with the edge of the door sweep.
 - g. Repeat steps a-f for the remaining unguarded door sweep edge.





Xcluder™ Pest Control Door Sweep Installation Instructions

Use for Part #s: 162600, 162602, 162604, 162608, 162620, 160622 & 162622-E, 160624, 160628

Installation Instructions: (Continued)

5. Close door. Hold sweep at bottom of door. Tap down until contact is made between the sweep and the threshold.
6. Mark screw locations on the aluminum bracket. Mark the first two spots 10cm in from each end of the sweep. Mark the remaining locations so that they are evenly spaced and approximately 20cm apart on center.

IMPORTANT: The center of the hole should be no more than 12mm from the bottom of the aluminum bracket.

7. Drill pilot hole for screws
8. Attach sweep with the mounting screws of your choice.

IMPORTANT: Make sure the door sweep makes even contact with the threshold (or floor) across it's width.