

The Single Box Version

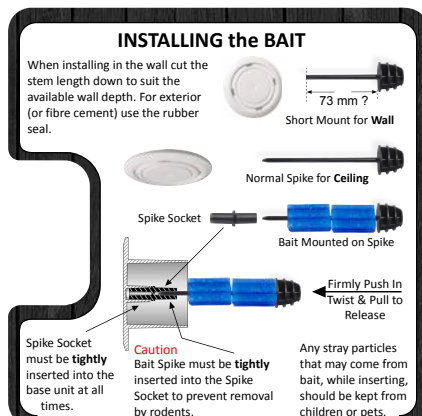
(Similar procedure for the 3 pack and 6 pack)



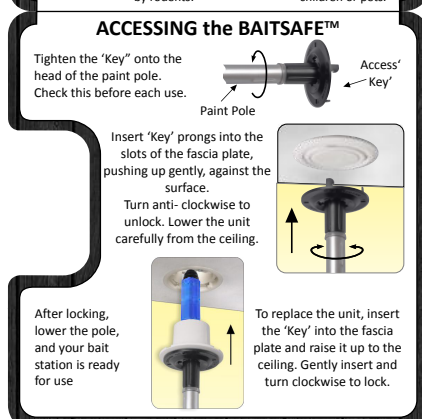
The Information on the Flaps that Fold into the Box

(They open out and are perforated for easy tear off)

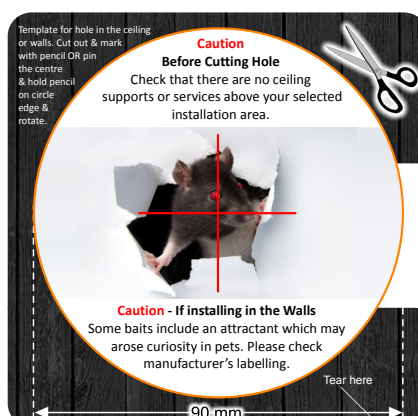
Installing the bait



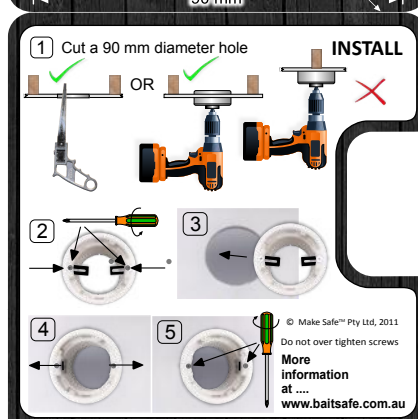
Accessing the bait



Cutting template for ceiling or wall



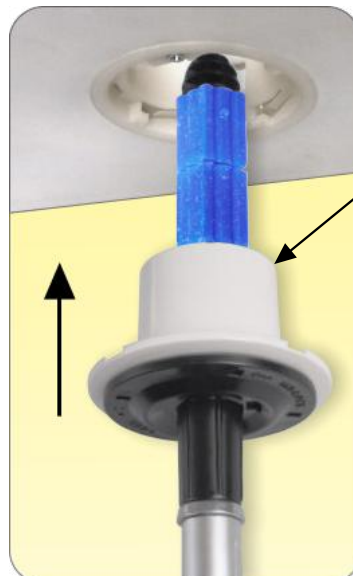
Installing in the ceiling or wall



The parts in the Box



The 2 tabs reach out to clamp unit to ceiling or wall panels including foam filled



The underside of the base unit is designed to catch 'spoils' from the bait and other contaminants. BaitSafe™ does not discriminate between baiting methods and can hold, bait blocks, paste or pellets in some cases even liquids.

Install

Caution

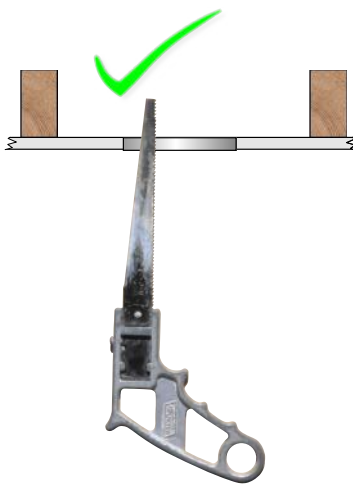
Before Cutting Hole

Check that there are no ceiling supports or services above your selected installation area.

Caution - If installing in the Walls

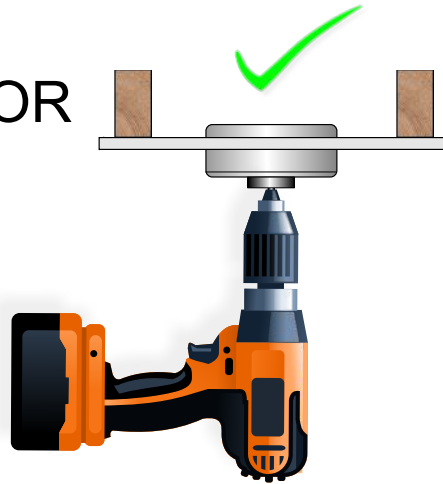
Some baits include an attractant which may arouse curiosity in pets. Please check manufacturer's labelling.

1 Cut a 90 mm diameter hole

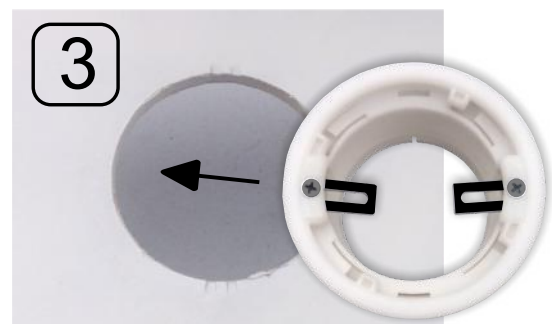
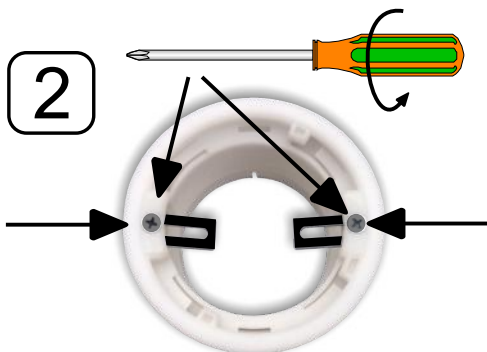
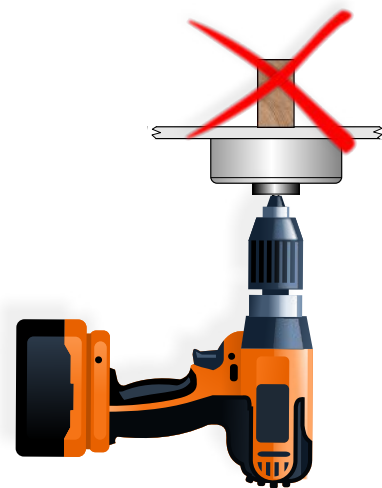


Insulate handle
or use glove

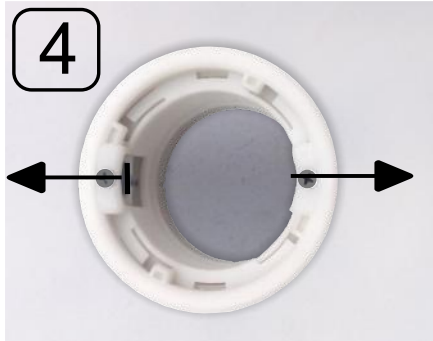
OR



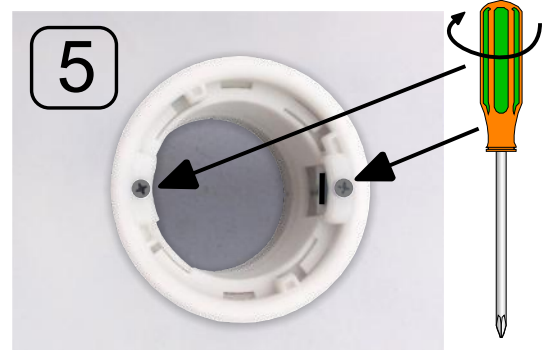
Always check
for dangerous
services above



Install ..continued

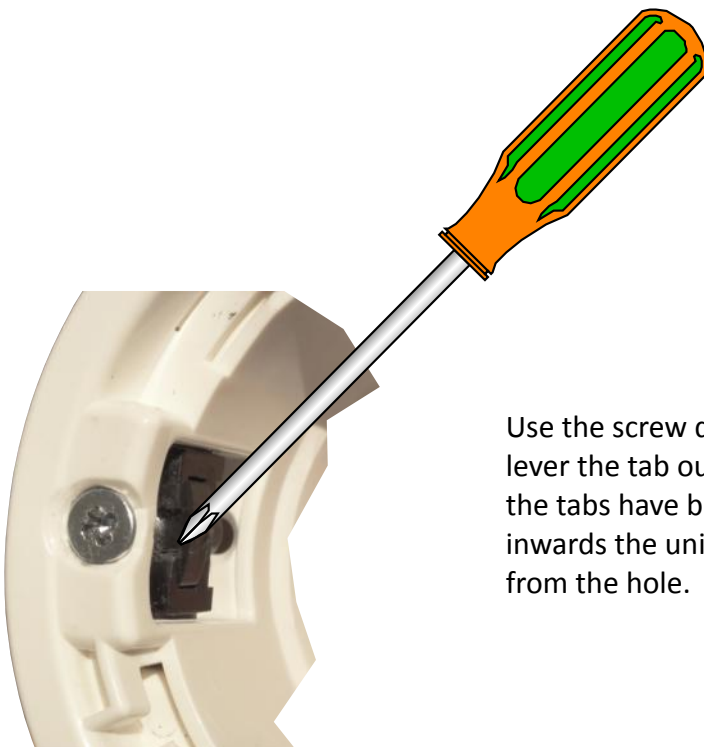


Push the tabs outwards



Do not over tighten screws

Should you wish to Remove BaitSafe™



Use the screw driver tip to lever the tab out here. When the tabs have been moved inwards the unit can be taken from the hole.

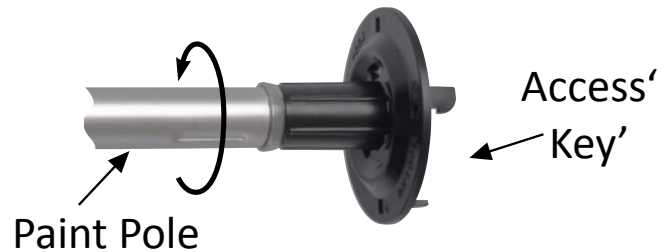


More information atwww.baitsafe.com.au

© MakeSafe™ Pty Ltd, 2012

Accessing the BaitSafe™

Tighten the 'Key' onto the head of the paint pole.
Check the key is tight before each use.



Insert 'Key' prongs into the slots of the fascia plate, pushing up gently, against the surface.

Turn anti-clockwise to unlock.
Lower the unit carefully from the ceiling.

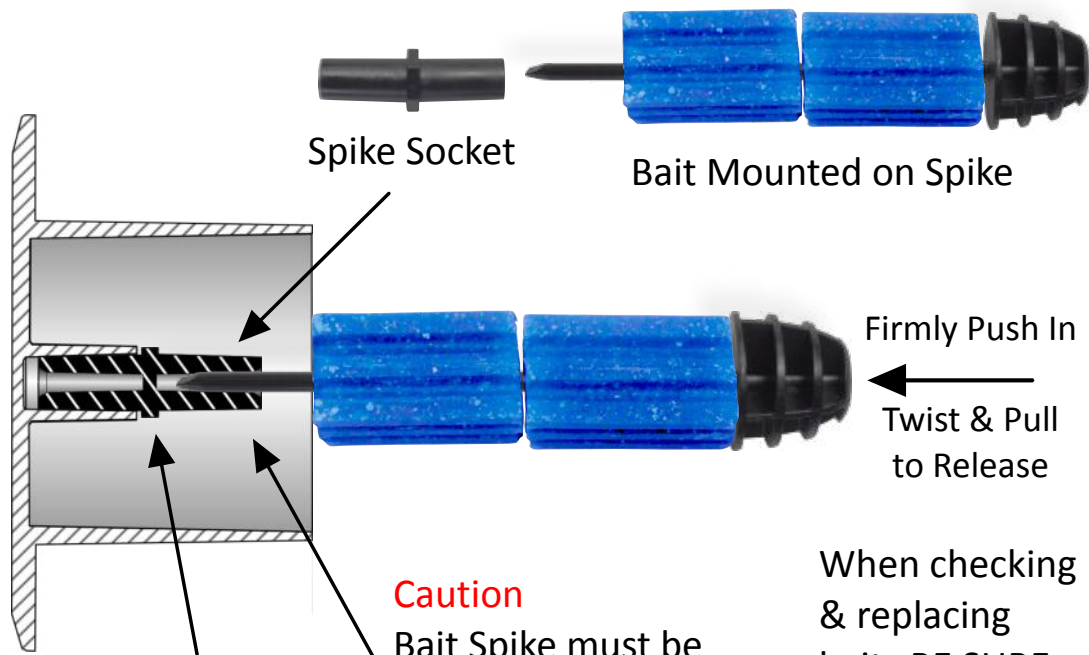
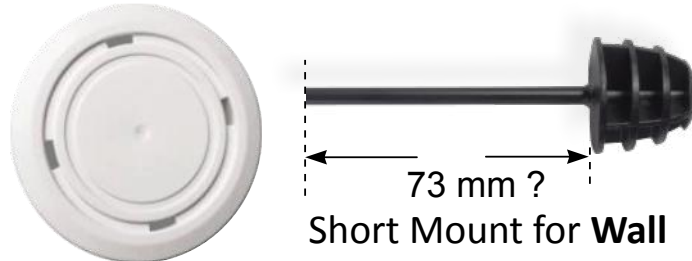


To replace the unit, insert the 'Key' into the fascia plate and raise it up to the ceiling.
Gently insert and **turn clockwise to lock.**

After locking, lower the pole, and your bait station is ready for use.

Installing the Bait

When installing in the wall cut the stem length down to suit the available wall depth. For exterior (or fibre cement) use the rubber seal.



Spike Socket must be **tightly** inserted into the base unit at all times.

Caution
Bait Spike must be **tightly** inserted into the Spike Socket to prevent removal by rodents.

When checking & replacing baits BE SURE the Spike is secured **tightly** onto the socket.

Any stray particles that may come from bait, while inserting, should be kept from children or pets.